

<https://www.halvorsen.blog>



Raspberry Pi

Installation and Remote Access

Hans-Petter Halvorsen

Contents

- Raspberry Pi
- Raspberry Pi Imager
- Advanced Options
- PuTTY
- VNC
- Remote Desktop Connection (RDC)
- VNC Viewer

Introduction

- We will install Raspberry Pi OS on the Raspberry Pi using the **Raspberry Pi Imager**
- If you have a Monitor (+ MicroHDMI to HDMI cable), Keyboard and a Mouse, you are ready to start using Raspberry Pi
- What if you don't have a Monitor, Keyboard and Mouse and want to setup and use the Raspberry Pi remotely?
- We will use the **Advanced options** in Raspberry Pi Imager to setup **SSH**, **WiFi**, etc.
- Then we can use **PuTTY** to get remote Terminal access to the Raspberry Pi
- Then we will use PuTTY to configure the Raspberry Pi by enabling **VNC** and make it ready for using the Raspberry Pi remotely using **Remote Desktop Connection (RDC)**
- An alternative to RDC is **VNC Viewer**

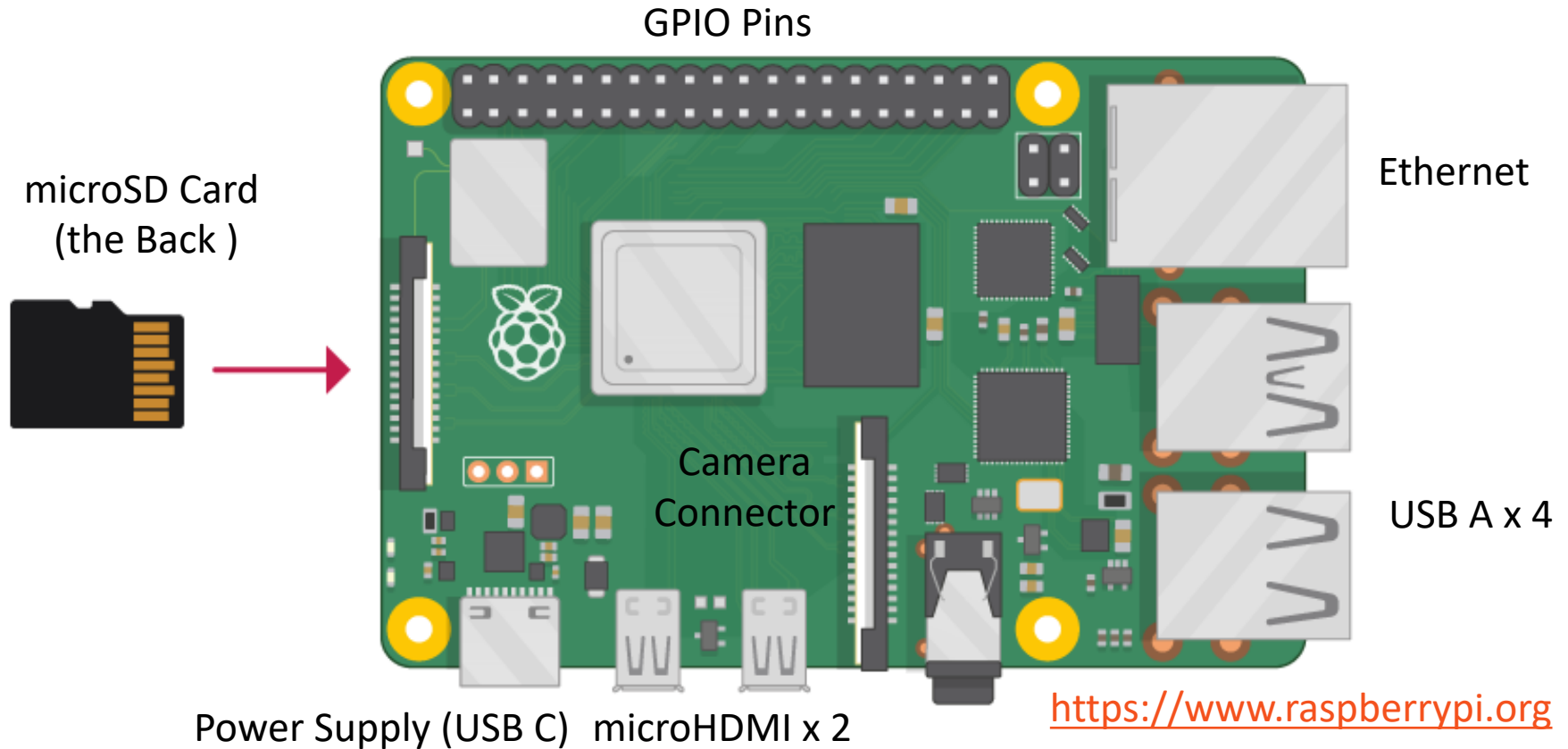


Raspberry Pi

Hans-Petter Halvorsen

[Table of Contents](#)

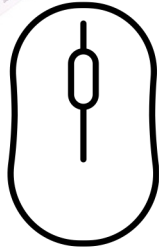
Raspberry Pi



What Do You Need?

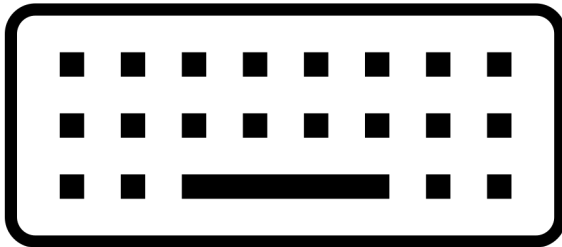


USB C Power Supply
15W (5V, 3A)

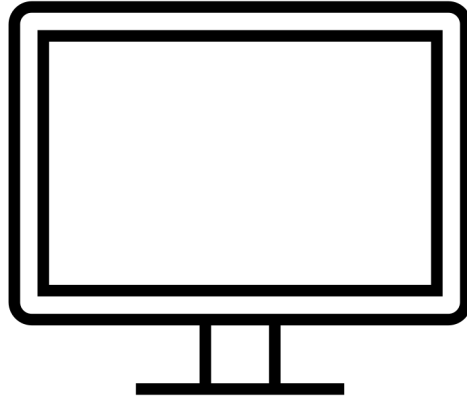


Mouse

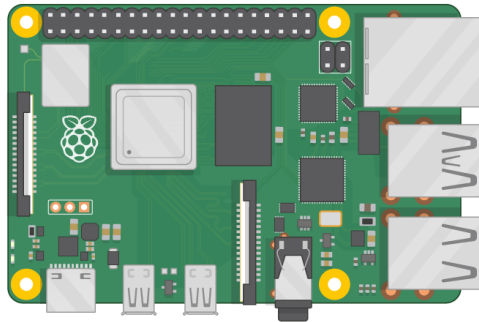
Keyboard



Monitor (with HDMI)



Raspberry Pi



microHDMI to HDMI Cable



Micro SD Card (+ Adapter)

(8GB or more)



<https://www.raspberrypi.org>

Raspberry Pi OS

- In order to make your Raspberry Pi up and running you need to install an Operating System (OS)
- The OS for Raspberry Pi is called **Raspberry Pi OS** (previously known as Raspbian)
- Raspberry Pi runs a version of an operating system called **Linux** (Windows and macOS are other operating systems).
- To install the necessary OS, you need a **microSD** card
- Then you use the **Raspberry Pi Imager** in order to download the OS to the microSD card

<https://www.raspberrypi.org/software/>

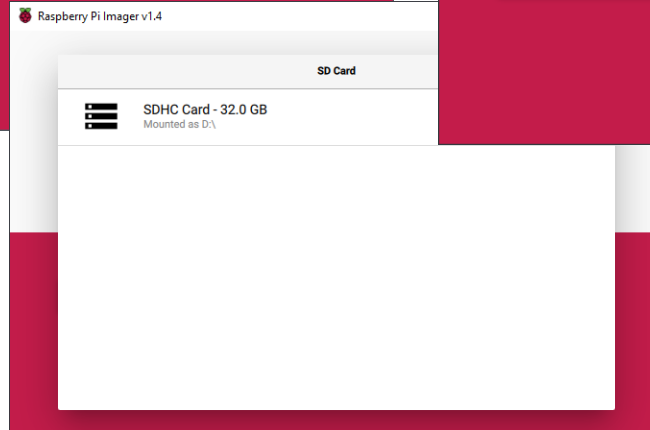
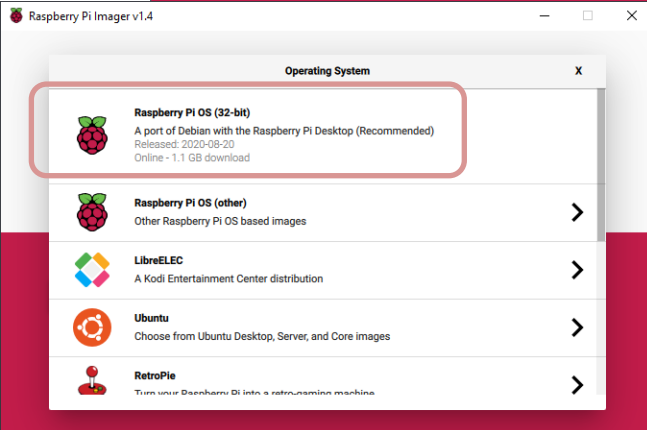
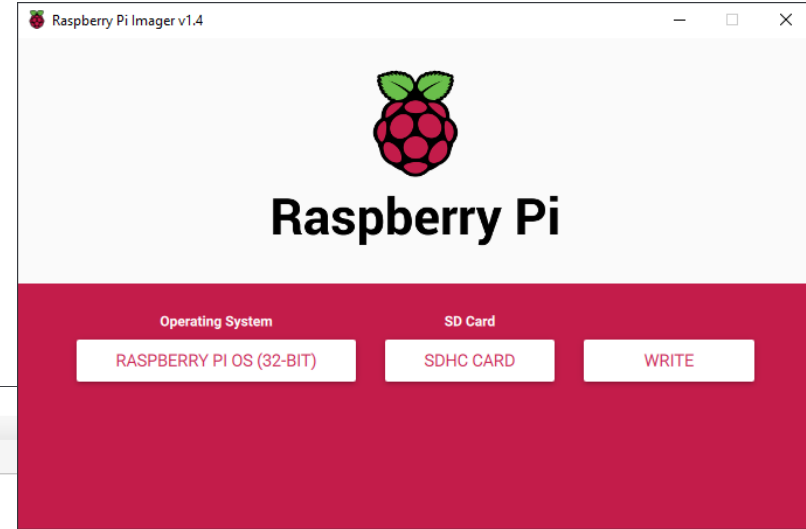


Raspberry Pi Imager

Hans-Petter Halvorsen

[Table of Contents](#)

Raspberry Pi Imager





Advanced Options



Raspberry Pi

Operating System

RASPBERRY PI OS (32-BIT)

Storage

SDHC CARD

WRITE



Advanced options

Image customization options for this session only

Set hostname: raspberrypi.local

Enable SSH

Use password authentication

Allow public-key authentication only

Set authorized_keys for 'pi': _____

Set username and password

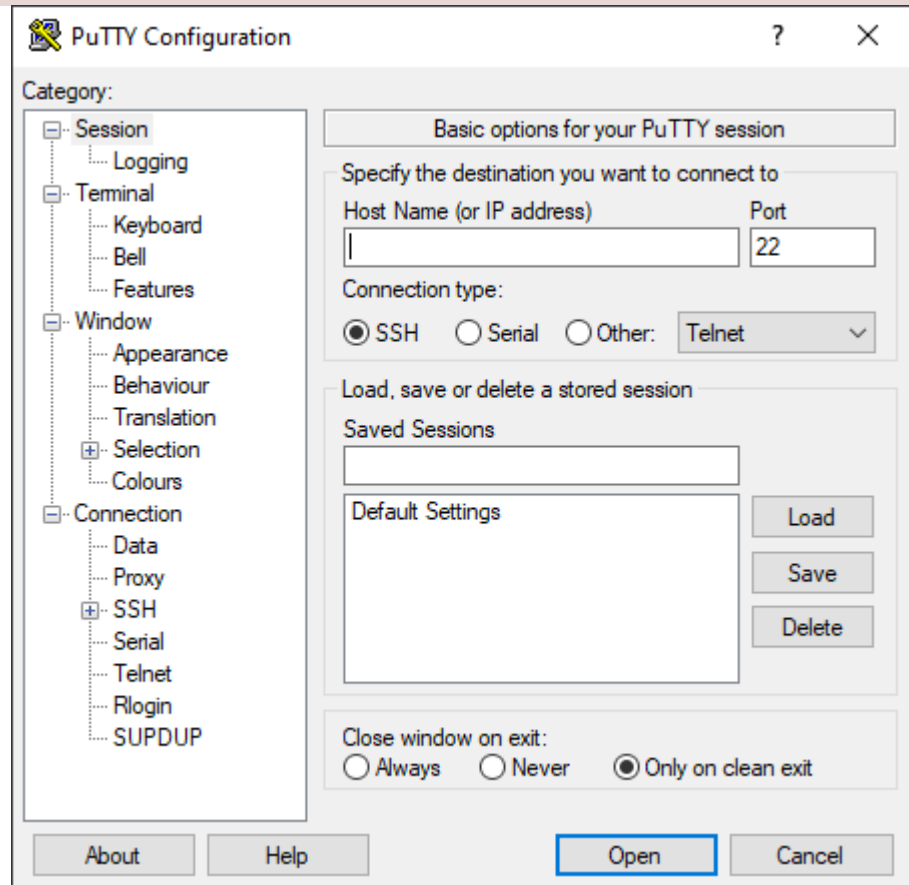
SAVE

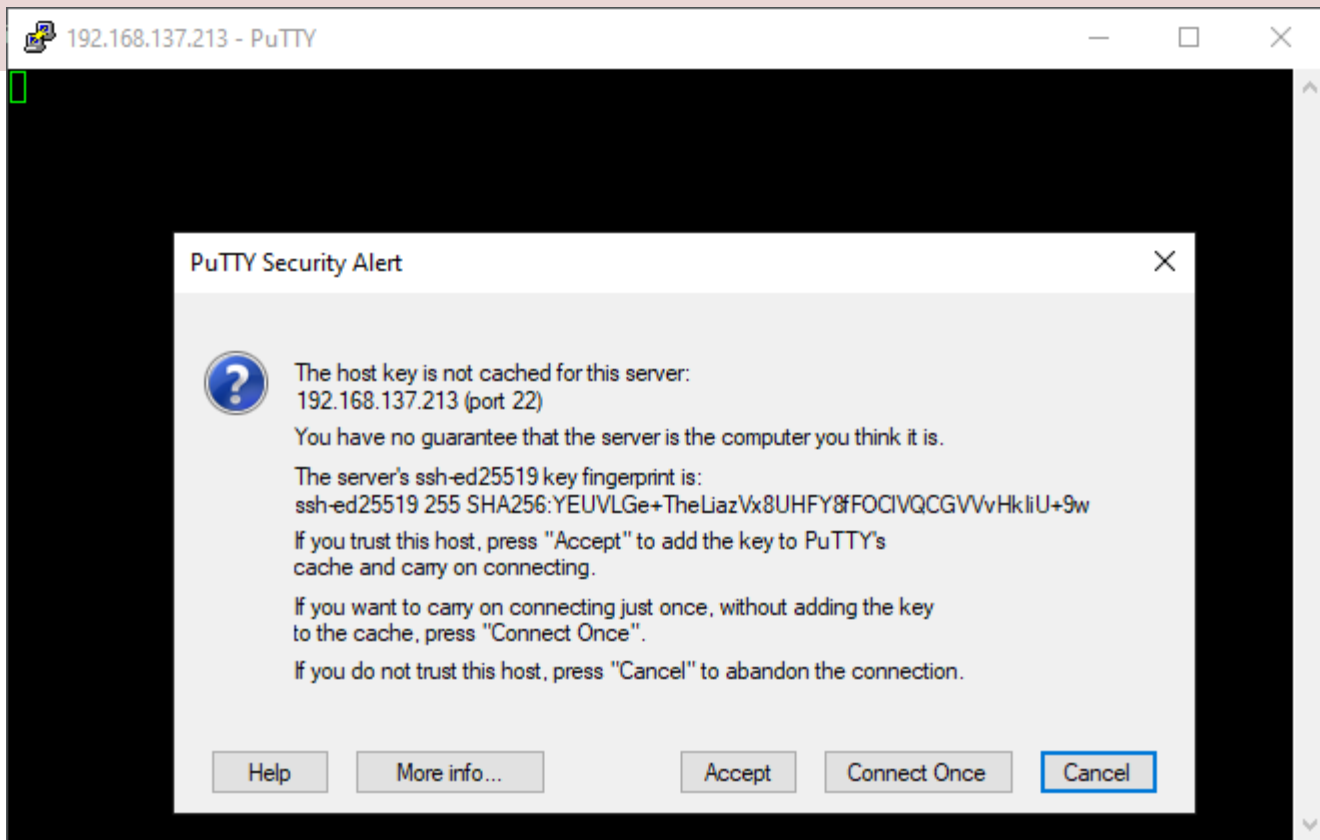


PuTTY

PuTTY

<https://www.putty.org/>





This appears only the first time. Click Accept

```
192.168.137.213 - PuTTY
login as: pi
```

```
pi@raspberrypi: ~
login as: pi
pi@192.168.137.213's password:
Linux raspberrypi 5.15.61-v7l+ #1579 SMP Fri Aug 26 11:13:03 BST 2022 armv7l

The programs included with the Debian GNU/Linux system are free software;
the exact distribution terms for each program are described in the
individual files in /usr/share/doc/*/copyright.

Debian GNU/Linux comes with ABSOLUTELY NO WARRANTY, to the extent
permitted by applicable law.
Last login: Thu Sep 22 02:34:52 2022
pi@raspberrypi:~ $
```

Now you are ready to interact and configure your Raspberry Pi

Type **exit** in order to close the PuTTY window

Update Raspberry Pi OS

- Run the following commands in the Terminal window/PuTTY:
- First run the following:

```
sudo apt update
```

- Then:

```
sudo apt full-upgrade
```




VNC

Virtual Network Computing (VNC) is a Graphical Desktop-sharing System

VNC

Enabling VNC Server:

- Open a terminal on your Raspberry Pi or use PuTTY
- Enter the command **sudo raspi-config**
- Use the arrow keys to select **Interfacing Options** and press Enter
- Use the arrow keys to select **VNC** and press Enter.
- You will be prompted to enable VNC Server.



RDC

Remote Desktop Connection

XRDP

XRDP is a free and open-source implementation of Microsoft RDP (Remote Desktop Protocol) server

Install XRDP

- `sudo apt-get install xrdp`

Add User

In order to use RDC we need to create a new user on the Raspberry Pi

Create New User for RDC connection

- `sudo adduser <username>`

If user needs access to GPIO:

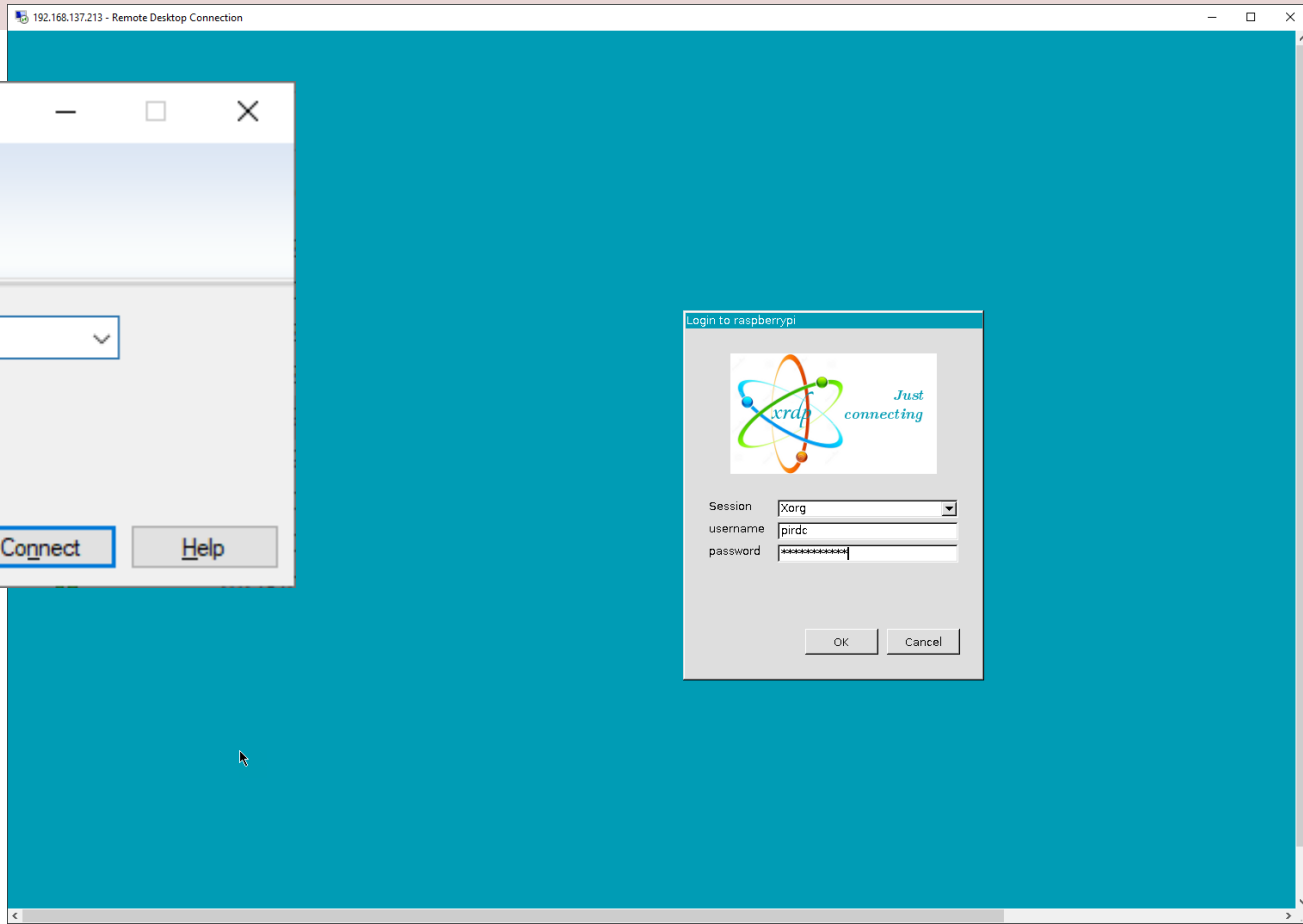
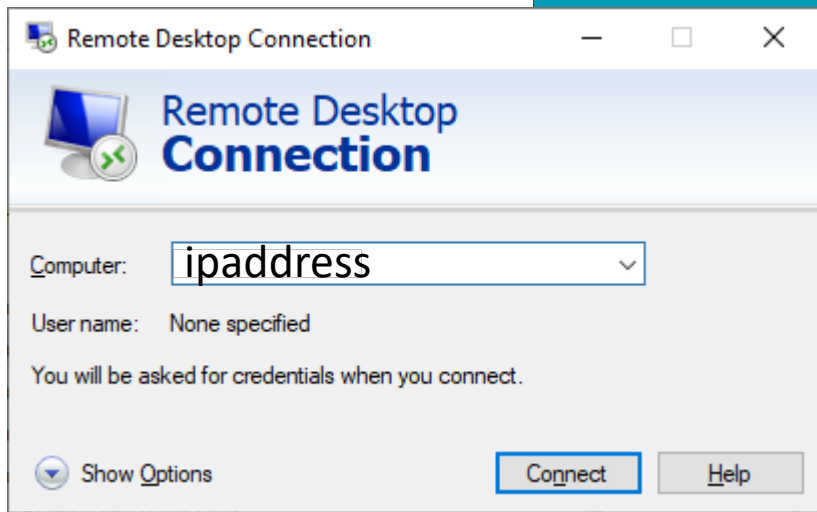
```
sudo adduser <username> gpio
```

Adding new user with SUDO permission

```
sudo usermod <username> -a -G pi,adm,dialout,cdrom,sudo,audio,video,plugdev,games,users,input,netdev,spi,i2c,gpio
```

<https://forums.raspberrypi.com/viewtopic.php?t=169079&sid=2dd732a5f43a8ded3bf1f837b36f8c91>

Remote Desktop Connection (RDC)





Wastebasket



thinclient_dri...





VNC Viewer

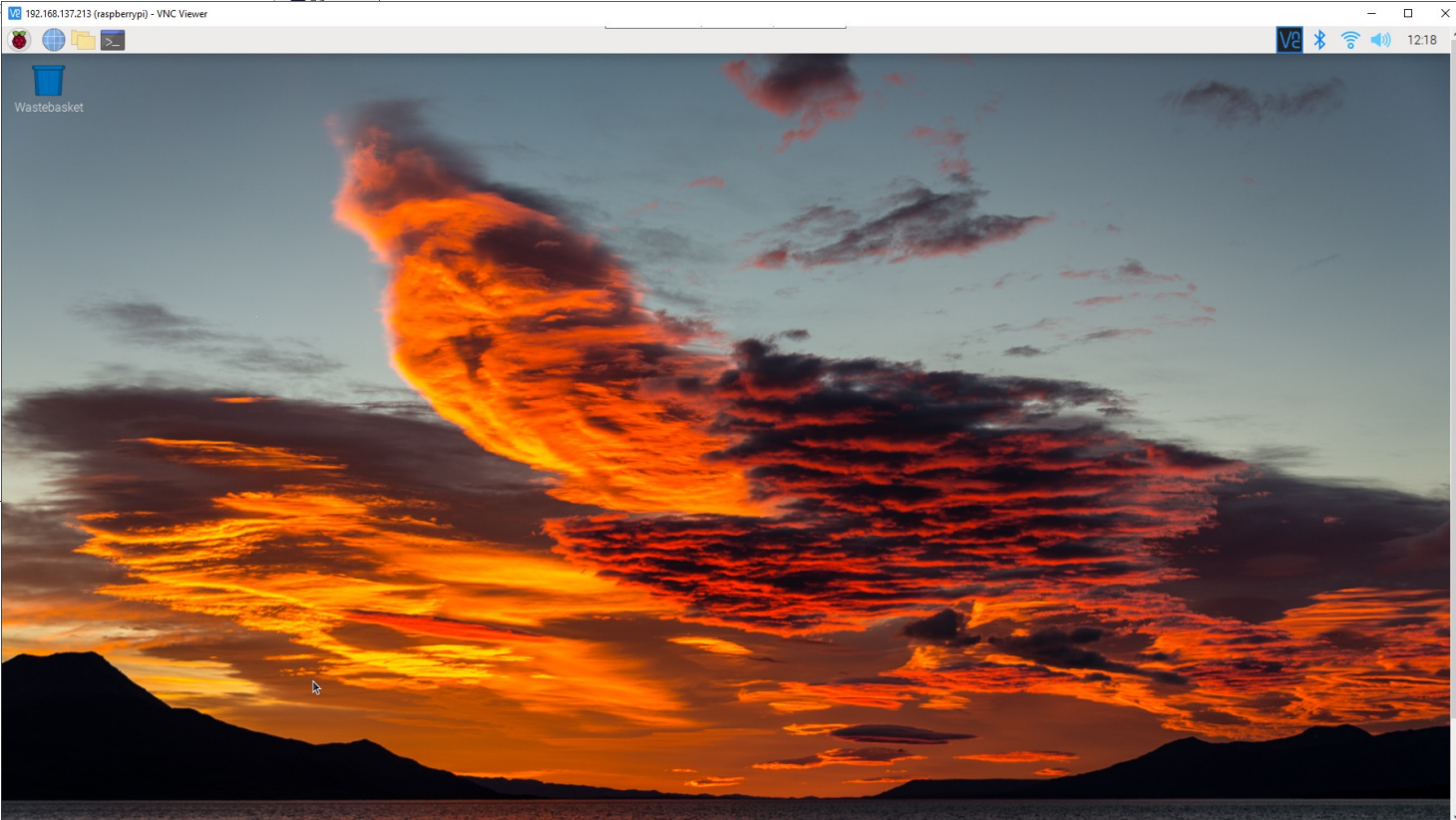
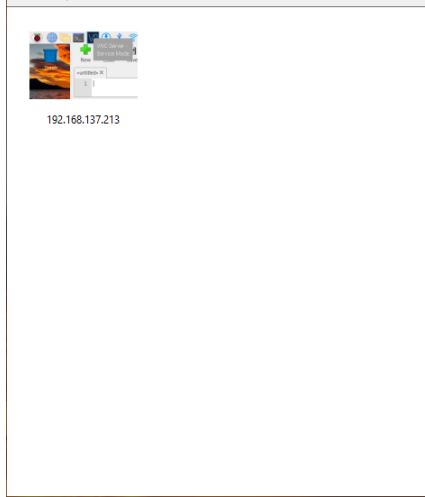
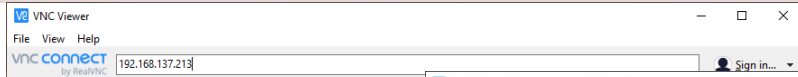
VNC Viewer is an alternative to Remote Desktop Connection (RDC)

VNC and VNC Viewer

- VNC Viewer is an alternative to Remote Desktop Connection (RDC)
- RDC is included with Windows
- You need to download and install the VNC Viewer

<https://www.realvnc.com/en/connect/download/viewer/>

VNC Viewer



Summary

- We installed Raspberry Pi OS on the Raspberry Pi using the **Raspberry Pi Imager**
- If you have a Monitor (+ MicroHDMI to HDMI cable), Keyboard and a Mouse, you are ready to start using Raspberry Pi
- What if you don't have a Monitor, Keyboard and Mouse and want to setup and use the Raspberry Pi remotely?
- We used the **Advanced options** in Raspberry Pi Imager to setup **SSH**, **WiFi**, etc.
- Then we used **PuTTY** to get remote Terminal access to the Raspberry Pi
- Then used PuTTY to configure the Raspberry Pi by enabling **VNC** and make it ready for using the Raspberry Pi remotely using **Remote Desktop Connection (RDC)**
- An alternative to RDC is **VNC Viewer**

Hans-Petter Halvorsen

University of South-Eastern Norway

www.usn.no

E-mail: hans.p.halvorsen@usn.no

Web: <https://www.halvorsen.blog>

